

PROFILE

The **Heavygel** compact industrial chillers of the **HGL** series have been designed to cope with the most demanding cooling requirements of high outputs in various industrial processes. They are air-cooled units with axial fans for external installation and equipped with screw compressors.

- The **HGL** series comes in configuration without any pump (**N**) for connection to GPH pumping stations.
- **Tropicalization fitted as standard** for continuous operation in environments up to **+45°C**
- The **Heavygel** series uses **ecological gas**, in respect of the European directives for environmental protection
- Electronic controller with microprocessor with easy-to-use immediate interface, fitted with self diagnosis for complete management of the cooling unit.
- Possibility of connecting **Remote-assistance** with **Frigel Service** via GSM.
- High efficiency screw **compressors**, with control of the cooling capacity supplied by means of proportional regulation.
- **Fans** with **direct current (brushless)** motor with speed control. Unlike the traditional step or TRIAC systems, these fans significantly reduce noise, increase the machine reliability and lifetime, reducing **the electric consumption of the fans by more than a third**.
- The particular design of the **Heavygel** chillers permits simplicity of use and easy maintenance of all the parts.
- Possible combination with the air blast fluid coolers of the **Ecodrygel** series to create **free-cooling** type cooling systems.
- The choice of components, the assembly procedures and the strict final testing of 100% of the production guarantee continuous operating cycles with excellent reliability even in the most difficult conditions.
- The range includes 7 models with a cooling output ranging from **285** to **947 kW**.

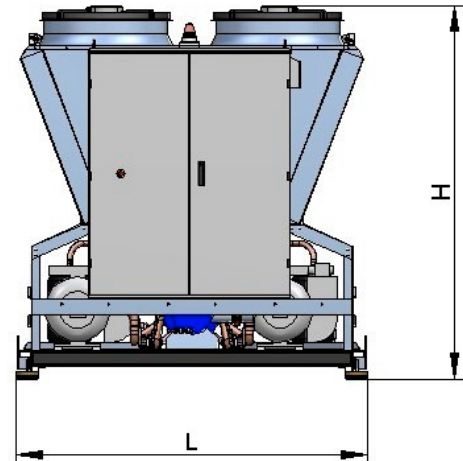
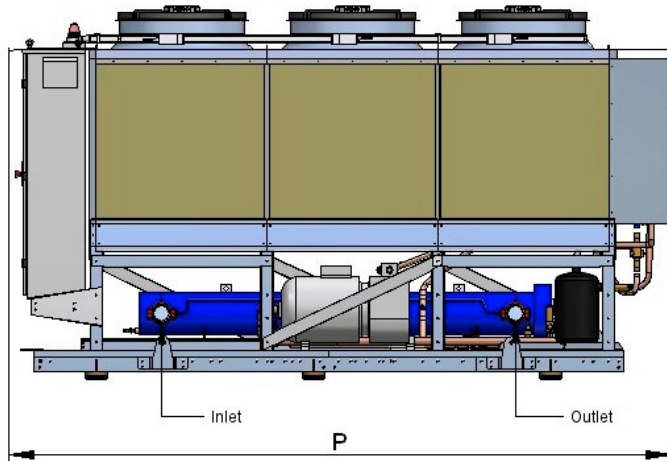


mod.
HGL660/2AN

TECHNICAL DATA

Heavygel			HGL						
Model			290/2	360/2	400/2	540/2	660/2	800/2	950/2
Cooling capacity	*15/25	kW	274	348	385	517	635	765	911
	*10/35	kW	219	278	308	413	508	612	729
	*7/32	kW	204	259	287	384	472	569	678
Cooling capacity "T" version	*10/35	kW	164	209	231	310	381	459	547
	*10/52	kW	131	167	185	248	305	367	437
Compressor	No.		2	2	2	2	2	2	2
	nom. HP		40	50	60	80	100	120	140
Evaporator	nom.	m ³ /h	38	48	53	71	87	105	125
	?p	bar	1,8	1,5	1,3	1,4	1,1	2,1	1,8
Fans	No.		6			8		10	12
	kW		2,5			2,5		2,5	2,5
Total Max Load Values	kW		110	132	148	181	208	251	302
	A		187	207	219	315	372	436	502
Sound level @ 10 mt.	dB (A)		54	54	54	55	56	57	58
Connections	Victaulic ®		DN100			DN150		DN150	DN150
Width - L	mm		2250			2250		2250	2250
Depth - P	mm		4300			5400		6450	7550
Height - H	mm		2400			2400		2400	2400
Net weight	Kg		3100	3300	3500	4000	4015	5005	5725

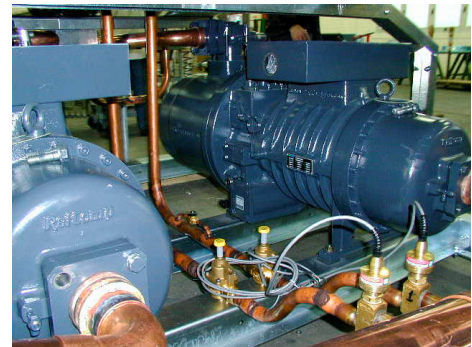
[*] Cooling water temperature / Ambient temperature (°C)
 Supply : 400 Volt ± 15% - 50Hz



TECHNICAL FEATURES

- **REFRIGERATION EQUIPMENT**

- screw rotary compressors
- shell & tube evaporators
- copper pipe condensers with aluminium fins, designed to withstand extreme climatic conditions (maximum temperature +45°C)
- die-cast aluminium axial fans with direct current (brushless) motor with speed control
- operating temperature can be set from 0°C to +30°C



- **WATER DISTRIBUTION EQUIPMENT**

- chiller pump, fitted with a high resistance mechanical seal and tropicalized motor
- completely insulated pipes, tank, connection parts and manifolds

- **ELECTRICAL AND CONTROL EQUIPMENT**

- separate thermal protection on each compressor, pump and fan
- main switch with door lock
- emergency stop
- in line with EN 60204/1 standards
- microprocessor control for regulating and controlling all the functions and displaying the alarms.



- **FRAME**

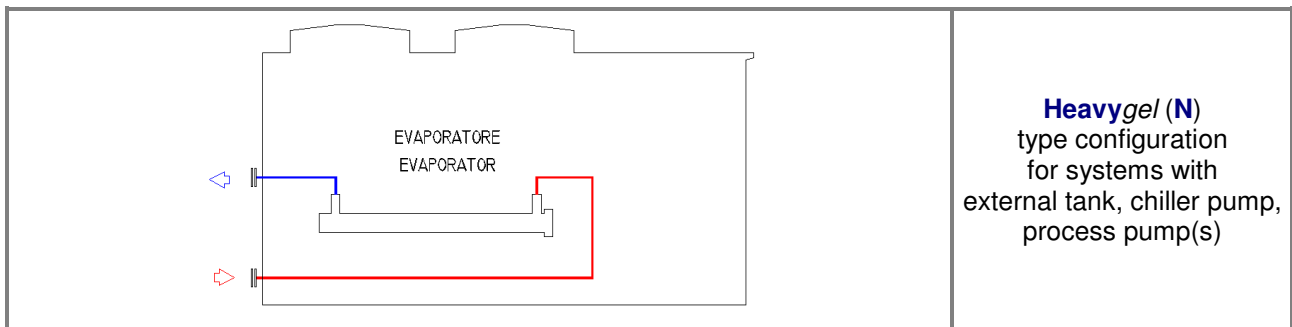
- galvanised steel

Ordering code Example: HGL660/2AM	HGL --- Series	660 --- Cooling capacity	/2	A A = Axial fans	N N = without pump

ACCESSORIES AND OPTIONALS

- **PMR Heavygel**
Remote control panel for operating the cooling unit remotely.
- *Epoxy* coating on condenser's aluminium fins for installation in aggressive environments.

CONFIGURATION



INSTALLATION DIAGRAM

